

Specialized Points or Tools

By Frank and Nancy Hoff

Published by Pasttime Artifacts

Article can be republished
in whole or part.

Permission from the authors and
recognition of source required.

While most seek to find the perfect point, my wife and I have always concentrated finding the unusual and/or have a specific use. Two points (A & B), found in two different places, have unclear use yet may have been made by the same person. These two unusual archaic period points (knife blades?) are separate finds located about 90 miles apart. The first (A) was found by myself in a field adjacent to our property in Dade City, Florida located 30 miles inland from the west coast of Florida while the other (B) was found by a friend in Cedar Keys located 100+ miles northwest along the Gulf of Mexico.

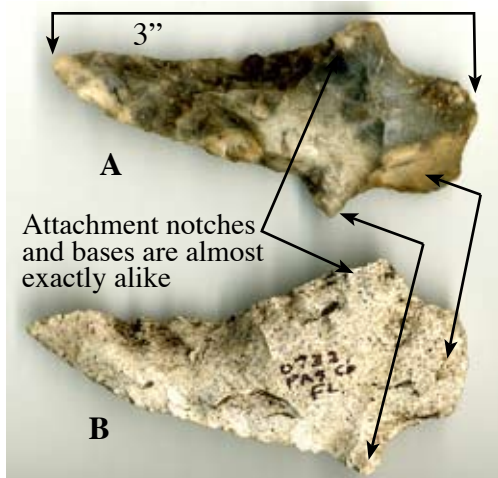


Figure 1 - Same tool maker? Extreme upward curvature of the blade and distinct attachment knobs. From locations 100+ miles apart.

Upward curving blades are common on points utilized as knives. However, the extreme unusual curvature of examples (A and B) make them very unique and curious. Although shaped in a "sword-like" form you first feel that this is just caused from continuous sharpening during use. In addition, I was also offered another point like these from around our property but thought it was a reproduction and now believe otherwise. Points point (C and D) were also found in the vicinity of our property. Point (C) shows that same attachment knob as (A and B) but is shaped more like a typical knife blade. All three,

(A, B and C), are crudely constructed and have the same shaped upper attachment knob. Example (D) also came from the vicinity of our property in Dade City, is fairly well made and is the classical shape of a knife blade. All four, (A, B, C and D), appear to be Kirk types which would place them about in the Middle Archaic (5000 to 4000 B.C.).

They are obviously not your typical knife blade indicating they may have been created for a specific use. Can't be for oyster shucking tool since we do not have oysters in Dade City. Irregardless of their use and age, blades (A and B) and perhaps (C) appear to be made by the same person. Blade (A) is made of a gray/black chert, (B) is made of hard white limestone and (C) is made of yellow/brown agatized coral chert. Finer secondary chipping is mainly found bottom edge and at the tip of all three blades. Since (A and B) and the questionable blade that was offered all came from Dade City it is likely that the maker of all three blades may have resided in the Dade City area. Blade (A) that was found in Cedar Key may have been traded or the maker may have also have resided in Cedar Keys at one period in time?

Two additional points (D and E), are constructed,

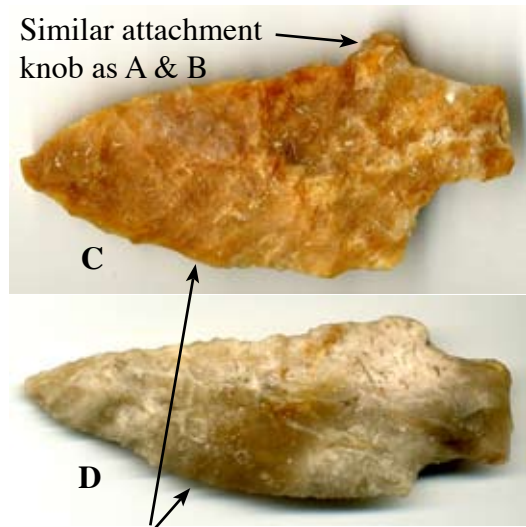


Figure 2 - Typical upward curved blade of a knife.

or should we say may have been reconstructed, from a normal point and appear to be redone after being broken. Location of point (D) was inland in Dade City, Florida and (E) was found along the Gulf Coast in St. Petersburg, Florida about 50 miles away. Point (E) was used as an drill or awl and has smooth edges from considerable grinding. Point (D) appears as if is was broken perhaps during initial construction and then reformed into a awl

or drill. It does not show much used but was found by a “turtle-back” hide scrapper made from the same material which may help indicate the specific use of this strange point. Both were made from agatized coral.

Anyone who can provide more information on this type of blade and/or it’s use would be of value to all who appreciate this great hobby.

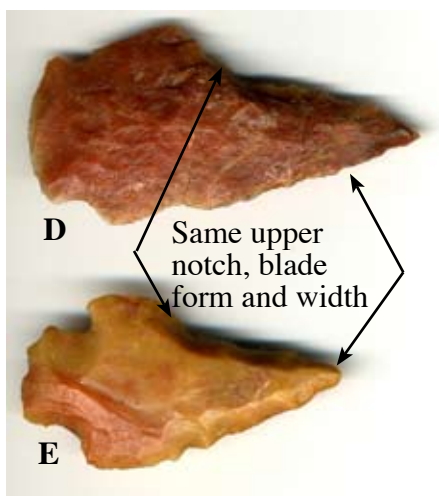


Figure 3 - Similar drills or awls from locations 50 miles apart.